

PRO LINE FUSION® UPGRADE FOR YOUR CITATION® CJ3®

Your all-in-one approach for airspace modernization
and situational awareness.



**Rockwell
Collins**

Building trust every day

A fully loaded package of baseline features that enable enviable options

	Baseline	Options
ADS-B Out V2 (DO-260B)	X	
WAAS and LPV approaches	X	
Second FMS	X	
Radius-to-fix (RF) legs	X	
Synthetic Vision System (SVS), showing: Obstacles Airport dome	X	
High-resolution topographical maps	X	
Touch-screen, 14.1-inch-wide primary flight displays	X	
Graphical flight planning	X	
Memorized flight deck formats	X	
Terminal charts and enhanced maps	X	
Automatic display and sensor reversion	X	
Surface Management System for takeoff and landing awareness	X	
Runway highlighting and alerting	X	
Graphical weather		X
IFIS (charts) on outboard AFD (dual)		X
Wireless data loading		X
Second GNSS sensor		X
Second ADF		X
Second DME		X
Third VHF/data link		X
High-frequency communications (HF)		X
Video window on AFD (NTSC)		X

A proven upgrade path

Your CJ3® upgrade to Pro Line Fusion® will follow the same optimal installation approach taken by many other customers who have chosen this upgrade for aircraft originally delivered with Pro Line 21™.

Because Pro Line Fusion is made by Rockwell Collins, the company that made your current Pro Line 21 avionics, it seamlessly integrates with your aircraft's major behind-the-scenes components.

It enables you to save cost and downtime by placing your investment where you'll see the biggest return. For example, Pro Line Fusion replaces your pilot displays and controls while retaining your CJ3's modern and reliable autopilot and radios.

Your fresh start yields even more savings – two-year warranty and CASPSM

When you install Pro Line Fusion in your CJ3, you receive a comprehensive, two-year warranty on all new equipment. Additionally, all the original Rockwell Collins avionics that remain on your CJ3 receive warranty-like coverage via our Corporate Aircraft Service Program (CASPSM) for the same period.

This coverage rounds out the financial value of your upgrade experience, reducing your post-upgrade operating costs while keeping you on wing, so you can make the most of your business asset.

CASP includes:

- ▶ Unlimited exchange, rental and repair at no charge
- ▶ Equipment overhaul
- ▶ Reliability service bulletins
- ▶ Removal and refit labor coverage via Rockwell Collins dealer
- ▶ RVSM annual certification (five hours labor reimbursement)
- ▶ No charge for troubleshooting
- ▶ No charge for unused exchange returns
- ▶ Up to five “no fault founds” without penalty
- ▶ AOG priority parts support
- ▶ Next-day shipping within the United States, both ways

Take your investment beyond the mandates

As a CJ3 owner, you have a new aftermarket option for meeting mandates while simultaneously enhancing your flying experience and your aircraft's resale value: Pro Line Fusion.

ADS-B Out (mandate January 2020)

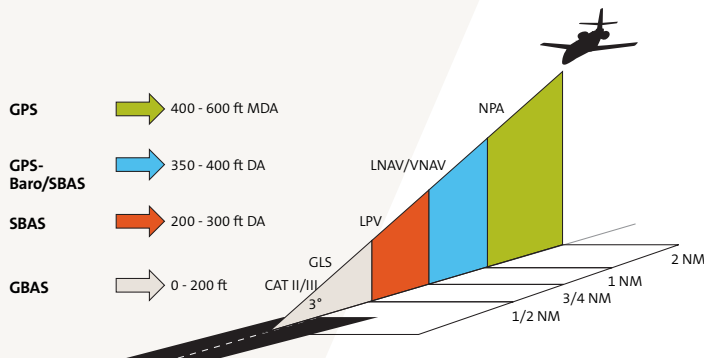
Complies with the latest standards for worldwide acceptance

NextGen® is transitioning from ground-based to space-based tracking, enabling more aircraft to fly more efficient routes with closer spacing. This ADS-B capability enables you to comply with the latest standards for worldwide acceptance.

Flight Management System

Taking advantage of the latest routes and terminal procedures requires the latest in FMS technology

- Saves time and money by enabling LPV approaches
- Uses GPS as primary means of navigation
- Adds X, Y, Z approaches
- Automatically shares takeoff and arrival data with IFIS and SVS
- More precision approaches available at more airports



- Over 4,000 LPV approaches (and counting) available in the United States
- Without SBAS, you are restricted to the NPA approach minimums

Synthetic vision – the new standard

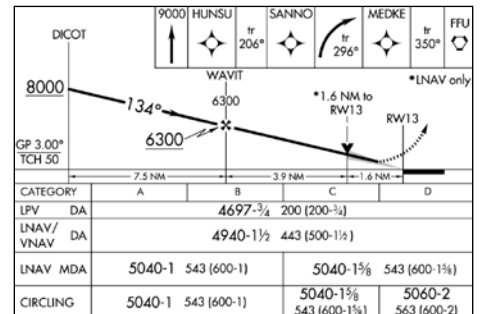
Fly more confidently at night, or in any weather

- Always know where you are relative to nearby terrain
- Stay oriented with your landing runway, simply and visually
- See where your airplane is going with flight path vector

WAAS capable GPS

Unlock NextGen airspace with a WAAS update

WAAS is the technology that enables precision RNAV GPS approaches, LPV and the ADS-B Out mandate. Now is the time to update.



DME/DME RNP-0.3 NA.

PROVO, UTAH AL-683 (FAA) 15176

WAAS CH 97307 W13A	APP CRS 134°	Rwy Idg 8599 TDZE 4497 Agl Elev 4497
--------------------	--------------	--------------------------------------

RNAV (GPS) RWY 13
PROVO MUNI (PVU)

⚠ For uncompensated Baro-VNAV systems, LNAV/VNAV NA below -23°C (-9°F) or above 40°C (104°F).
DME/DME RNP-0.3 NA.
Circling NA east of Rwy 18 and 31.

MISSED APPROACH: Climb to 9000 direct HUNSU and on track 206° to SANNO and right turn on track 296° to MEDKE and on track 350° to FFU VORTAC and hold.



Options

Information you need, when you need it

- › Touch screen
- › Icons
- › Graphical flight plan
- › Flexible, split screen windowing
- › Modern controls
- › Joystick
- › QWERTY keyboard



Aircraft Information Manager (AIM)

The day of databases being out of date, or of trying to remember where you left the USB stick you used for database updates, is gone.

With the IMS-3500 information management server and AIM, Rockwell Collins will deliver the database directly to the aircraft and send you a text message when the database is ready. A couple of keystrokes transfers it to the FMS or IFIS.

Data link (VHF)

- › Sends your FAA-filed flight plan directly to the aircraft

Second GPS

- › For those mission-critical situations where a backup is important

High-frequency (HF) radio

- › A cost-effective solution that provides aircraft with worldwide communication capabilities
- › Full-frequency HF system permits direct tuning of any of 280,000 frequencies between 2.0 and 29.9999 MHz in 100 Hz steps when operated in the discrete frequency mode
- › Discrete frequency mode provides USB, UD, AM equivalent, CW, LSB and LD operation. The 99 user-programmed channels can be programmed to operate in any of these modes.
- › Tuned directly from Pro Line Fusion

Your total solution



Make the most of your avionics upgrade and enhance your operations by including Rockwell Collins ARINCDirect™ flight support services.

- › Comprehensive flight planning
- › email
- › Flight plan upload
- › Flexible ARINCDirect Flight Operations System (FOS®)



Cabin solutions

Make every flight more enjoyable with cabin options such as our Airshow® moving map. Follow your flight in real time. Explore your destination or other global points of interest. Go mobile with the Airshow app for iPad® and Android™ tablets. And our Stage™ content service brings an unrivaled level of luxury to your cabin's entertainment capabilities.



Learn how our personalized flight support can make managing your operations easier, start to finish.

www.rockwellcollins.com/arincdirect

Building trust every day.

Rockwell Collins delivers innovative aviation and high-integrity solutions to commercial and government customers worldwide. Backed by a global network of service and support, we stand committed to putting technology and practical innovation to work for you whenever and wherever you need us. In this way, working together, we build trust. Every day.

For more information, contact:

Rockwell Collins
400 Collins Road NE
Cedar Rapids, Iowa 52498
+1.319.295.4085
email: csmarketing@rockwellcollins.com
www.rockwellcollins.com

**Rockwell
Collins**

Building trust every day